

伊州分会成员

IL Chapter



EDDIE NI

WINDFALL GROUP, PRESIDENT
AIDI PRESIDENT



JIMMY LEE

CHICAGO CHINATOWN CHAMBER OF
COMMERCE, PRESIDENT
AIDI HONORARY PRESIDENT



FRANK CHEN

HEUNG SENG CORP, CEO
AIDI HONORARY PRESIDENT



TONY HU

LAO SZE CHUAN USA, FOUNDER
AIDI HONORARY PRESIDENT



GARY CHEN

PARK TO SHOP SUPERMARKET
GROUP, CEO
AIDI HONORARY PRESIDENT



JAN ZHENG

WINDFALL GROUP, COO
AIDI CHIEF FINANCIAL OFFICER



JOHNNY ZHENG

ZHENG CONSTRUCTION, PRESIDENT
AIDI BOARD OF CONSULTANTS



KENNY CHEN

GOLDEN PARTNERS RESTAURANT
GROUP, PRESIDENT
AIDI VICE PRESIDENT



DANNY CHEN

WINDFALL GROUP, CHIEF
DIRECTOR
AIDI CHIEF SUPERVISOR



SHARON WONG

21 CENTURY, CEO
AIDI VICE PRESIDENT



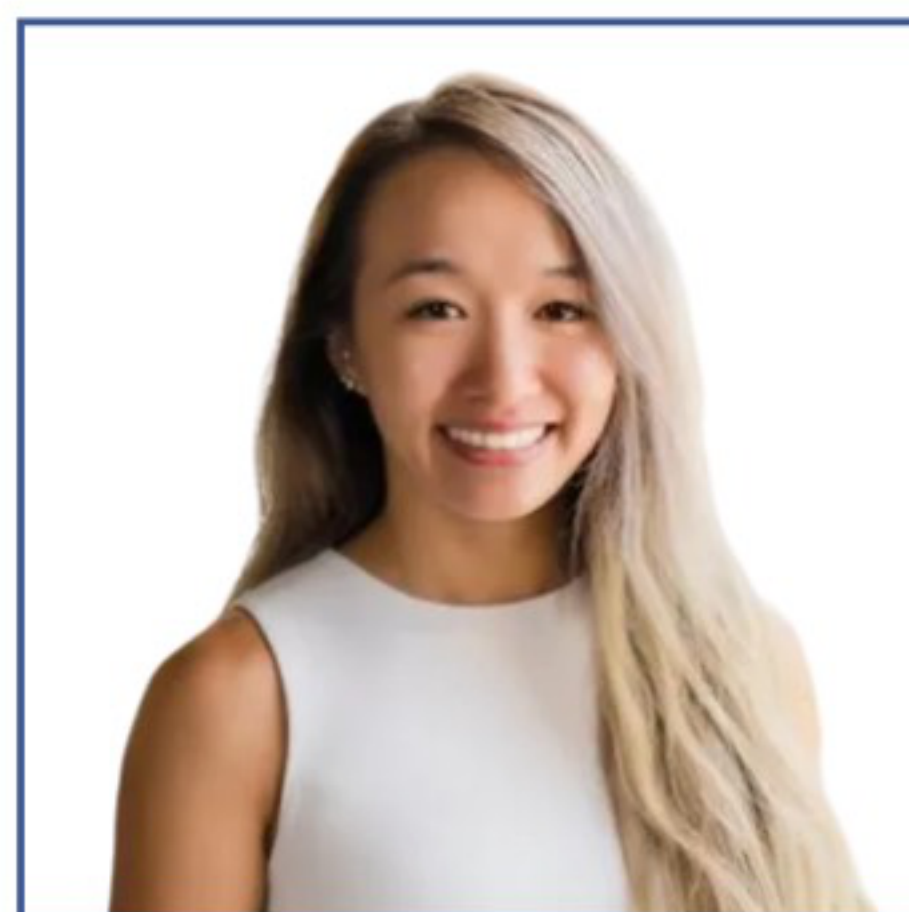
TONY WENG

SUNRISE MANAGEMENT GP,
PRESIDENT
AIDI VICE PRESIDENT



JACKIE LIN

PROCRAFT CABINETRY, CEO
AIDI BOARD MEMBER



JUDY NI

WINDFALL GROUP, DIRECTOR OF
REAL ESTATE
AIDI ENGLISH SECRETARY



JASMINE NI

WINDFALL GROUP, DIRECTOR OF
PROJECT MANAGEMENT
AIDI BOARD MEMBER



CHRIS HUANG

ATHENA DESIGN GROUP, FOUNDER
AIDI BOARD MEMBER



STEPHANIE GONG

RUTECH INC, CEO
AIDI SECRETARY GENERAL



MICHELLE MAI

C S CABINET LLC, CEO
AIDI BOARD MEMBER



ZENG LI

AMBERLEAF HOME, FOUNDER
AIDI BOARD MEMBER



ANSON LIU

JIN RESTAURANT GROUP, CEO
AIDI BOARD MEMBER



CHARLES ZHAO

TOP CHANNEL LETTERS, PRESIDENT
AIDI BOARD MEMBER



ZHENGdong HUANG

HUANG & HU PC, CO-FOUNDER
AIDI LEGAL COUNSEL



YILUN HU

HUANG & HU PC, CO-FOUNDER
AIDI LEGAL COUNSEL



SAICHANG XU, ESQ.

LAW OFFICES OF SAICHANG XU, OWNER
AIDI LEGAL COUNSEL